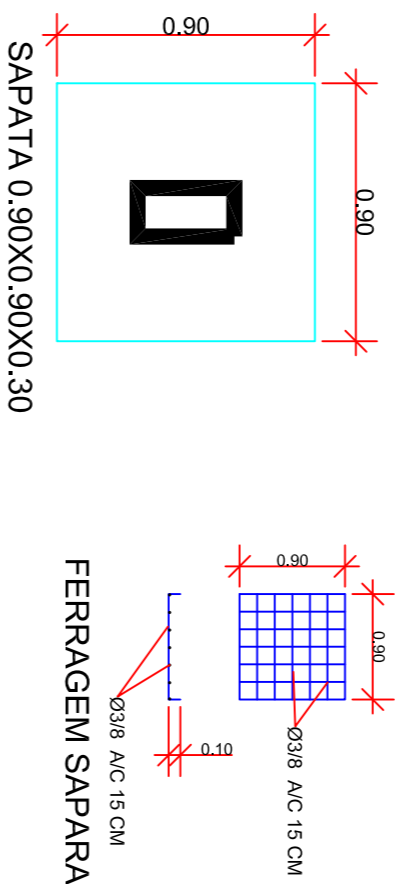
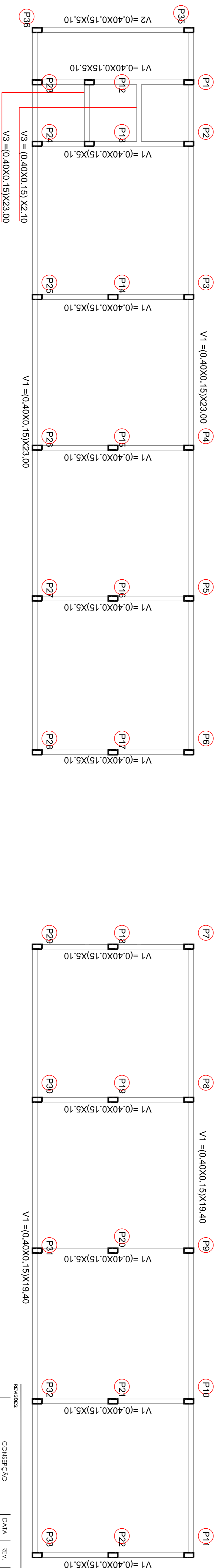


MEMORIA CALCULO SAPATAS  
 35 SAPATAS 0.90X0.90X0.30=8.50m<sup>3</sup>  
 CONCRETO 25 Mpa

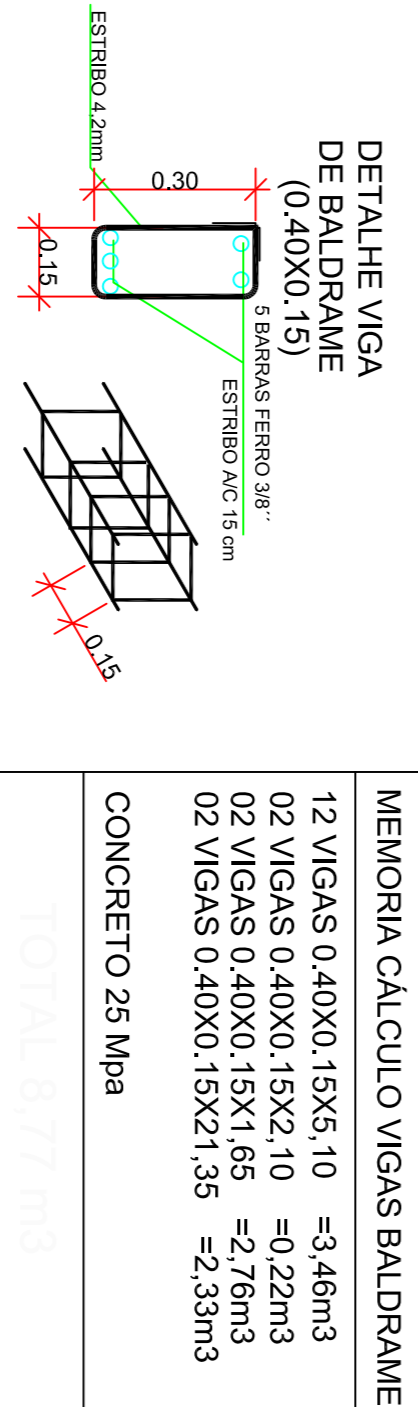
Ø 5/16" = 243.32 KG  
 CONCRETO 8.50m<sup>3</sup>  
 ESCAVACAO = 41.43m<sup>3</sup>  
 REATERRO = 27.09m<sup>3</sup>



FERRAGEM SAPARA



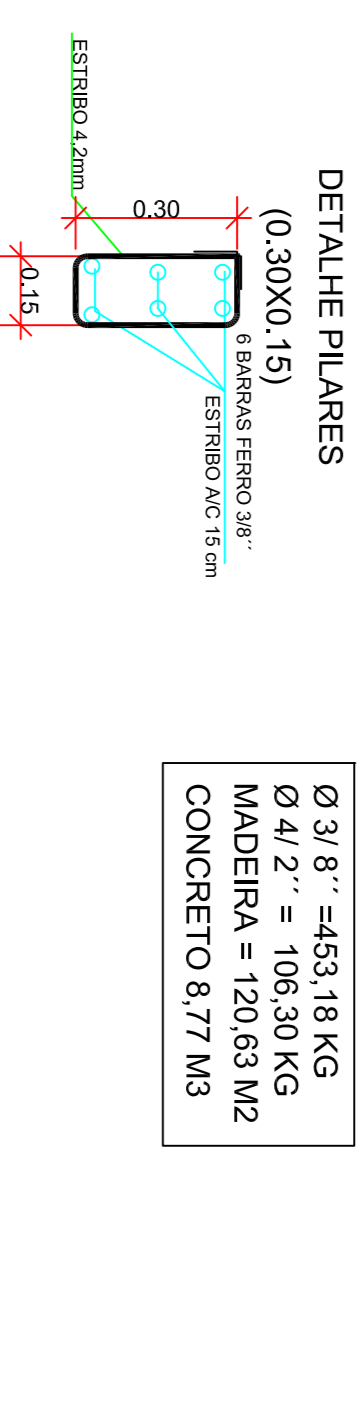
PLANTA VIGAS BALDRAME ESCALA 1/50



MEMORIA CALCULO VIGAS BALDRAME  
 12 VIGAS 0.40X0.15X5.10 = 3.46m<sup>3</sup>  
 02 VIGAS 0.40X0.15X2.10 = 0.22m<sup>3</sup>  
 02 VIGAS 0.40X0.15X1.65 = 2.76m<sup>3</sup>  
 02 VIGAS 0.40X0.15X21.35 = 2.33m<sup>3</sup>  
 CONCRETO 25 Mpa

MEMORIA CALCULO PILARES ARRANQUE  
 35 PILARES 0.30X0.15X0.80=1.26m<sup>3</sup>  
 CONCRETO 25 Mpa

MEMORIA CALCULO PILARES  
 11 PILARES 0.30X0.15X5.82=2.89m<sup>3</sup> (P1 ..... P11)  
 11 PILARES 0.30X0.15X4.36=2.16m<sup>3</sup> (P12.....P22)  
 11 PILARES 0.30X0.15X3.50=1.74m<sup>3</sup> (P23.....P33)  
 02 PILARES 0.30X0.15X2.20=0.20m<sup>3</sup> (P35 e P36)  
 CONCRETO 25 Mpa

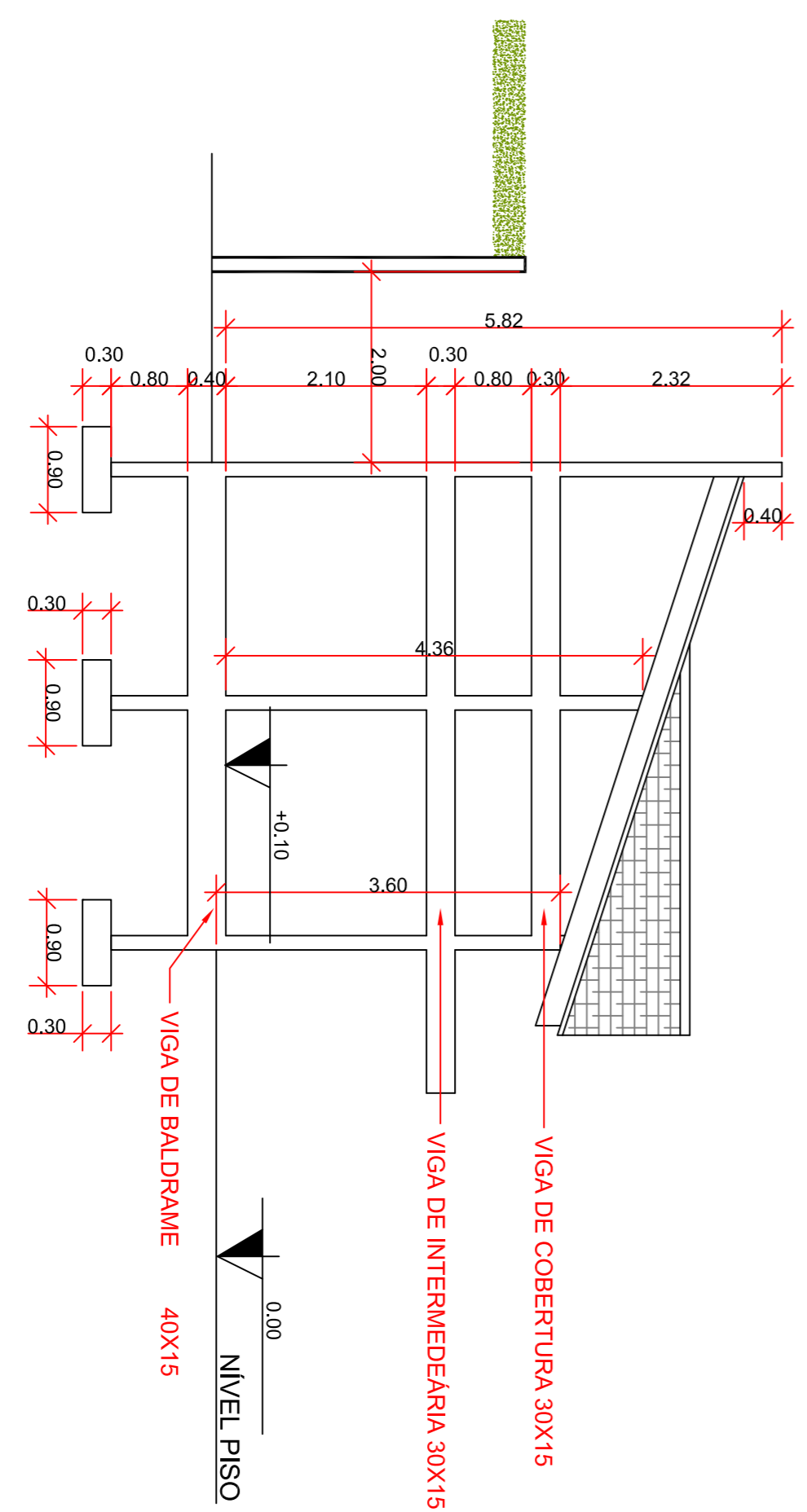


MEMORIA CALCULO PILARES ARRANQUE  
 Ø 3/8" = 453.18 KG  
 Ø 4/2" = 106.30 KG  
 MADEIRA = 120.63 M2  
 CONCRETO 8.77 M3

MEMORIA CALCULO PILARES  
 Ø 3/8" = 16.72 KG  
 Ø 4/2" = 298 KG  
 MADEIRA = 25.20 M2  
 CONCRETO 1.26 M3

MEMORIA CALCULO PILARES  
 Ø 3/8" = 576.37 KG  
 Ø 4/2" = 86.33 KG  
 MADEIRA = 109.40 M2  
 CONCRETO 6.97 M3

DETALHE ESTRIBO



PROJETO:	CASA DO ARTESÃO
DESENHO:	GILMAR SILVA
ARÇA:	21.6.24m2
DATA:	27/03/2017
ESCALA:	1 : 50
RESPONSÁVEL TÉCNICO:	SOU SANTONIO RIBEIRO 02/007/27
PROJETO ESTRUTURAL 01	PREFERENCIA M. DE OIACILIO COSTA
REFERENCIA AO BALDRAME E SAPATAS	PROJETO ESTRUTURAL 01



REVISÃO:	CONSERVAÇÃO	DATA	REV.	RESP.